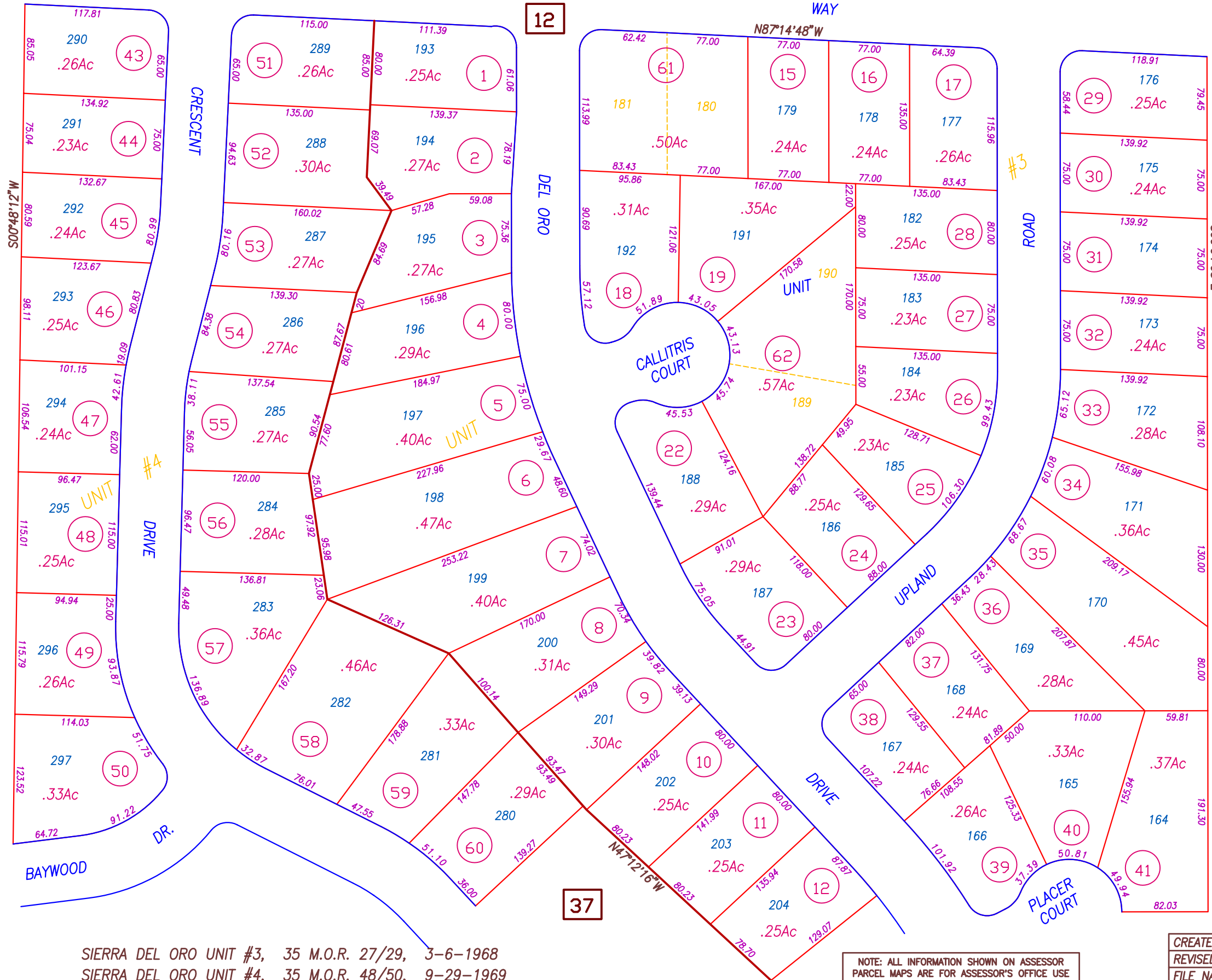




PTN. SEC. 13, T.23N. R.3E. M.D.B.&M.
IMPERIAL WAY



27

35

12

37

SIERRA DEL ORO UNIT #3, 35 M.O.R. 27/29, 3-6-1968
SIERRA DEL ORO UNIT #4, 35 M.O.R. 48/50, 9-29-1969

NOTE: ALL INFORMATION SHOWN ON ASSESSOR
PARCEL MAPS ARE FOR ASSESSOR'S OFFICE USE
AND DO NOT NECESSARILY CONSTITUTE LEGAL
LOTS. NO LIABILITY IS ASSUMED FOR THE
ACCURACY OF THE DATA SHOWN.

Butte County Assessor's Map
Book 65, Page 36

CREATED BY	DB	CREATED ON	7-25-2003
REVISED BY	SDT	REVISED ON	9-9-2003
FILE NAME	65-36	EFFECTIVE	2004-05 ROLL
Previous Book 57, Portion Of Page 52			
Compiled By The Butte County Assessor's Office			